

Building on the New Rural Paradigm – a view from the UK

Jane Atterton (Researcher,
Rural Policy Centre, SAC)
Frances Rowe (Rural Impact)



Ruralimpact

2011 RPC Work

Ruralimpact



RURAL POLICY CENTRE POLICY BRIEFING

Rural Policy in Scotland
Jane Atterton¹ and Frances Rowe²

Key points

- In Summer 2011, the Rural Policy Centre (RPC) commissioned an analysis of the OECD reviews of rural policy in England (2010/11) and Scotland (2007/08). This policy briefing discusses the key findings of the OECD's review of rural policy in Scotland, since 2008. A parallel policy briefing discusses recent rural policy developments in England. This policy briefing discusses the key findings of the OECD's review of rural policy in Scotland, since 2008. A parallel policy briefing discusses recent rural policy developments in England. This policy briefing discusses the key findings of the OECD's review of rural policy in Scotland, since 2008. A parallel policy briefing discusses recent rural policy developments in England.
- The OECD review discussed the characteristics of continuing economic downturn and the pressure of public sector budget cuts. The OECD review discussed the characteristics of continuing economic downturn and the pressure of public sector budget cuts. The OECD review discussed the characteristics of continuing economic downturn and the pressure of public sector budget cuts.
- The OECD review concluded that rural policy in Scotland should be able to determine their needs and realise their opportunities. The OECD review concluded that rural policy in Scotland should be able to determine their needs and realise their opportunities. The OECD review concluded that rural policy in Scotland should be able to determine their needs and realise their opportunities.
- The OECD review concluded that rural policy in Scotland should be able to determine their needs and realise their opportunities. The OECD review concluded that rural policy in Scotland should be able to determine their needs and realise their opportunities. The OECD review concluded that rural policy in Scotland should be able to determine their needs and realise their opportunities.
- The OECD review concluded that rural policy in Scotland should be able to determine their needs and realise their opportunities. The OECD review concluded that rural policy in Scotland should be able to determine their needs and realise their opportunities. The OECD review concluded that rural policy in Scotland should be able to determine their needs and realise their opportunities.

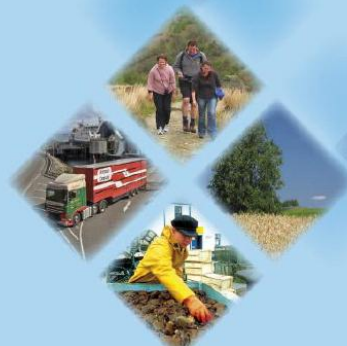
¹ Dr Jane Atterton is a Researcher in the Rural Policy Centre and regionally in England. She was commissioned by the RPC and regionally in England. She was commissioned by the RPC and regionally in England. She was commissioned by the RPC and regionally in England.

Rural Policy Centre



Rural policy in Scotland and England Comparative Perspectives

Frances Rowe
September 2011



RURAL POLICY CENTRE POLICY BRIEFING

Rural Policy in England
Frances Rowe¹

November 2011 (RPC PB 2011/12)



Key Points

- In Summer 2011, the Rural Policy Centre (RPC) commissioned an analysis of the OECD reviews of rural policy in England (2010/11) and Scotland (2007/08). This policy briefing discusses the key findings of the OECD's review of rural policy in England, and reviews key developments in rural policy since the review. A parallel policy briefing discusses recent rural policy developments in Scotland. This is a timely moment to review recent rural policy developments in both countries, particularly given the continuing economic downturn and the pressure of public sector budget cuts.
- The OECD review discussed the characteristics of England's rural policies and policy-making processes with reference to its 'New Rural Paradigm' (NRP). The two key principles which characterise the NRP are a focus on places rather than sectors and a focus on investments rather than subsidies. The NRP also argues that more power and investment should be devolved from the centre and that rural areas should be able to determine their needs and realise their opportunities.
- The OECD review found many of the principles of the NRP in evidence in England's rural policy framework. In particular, it was positive about the broad based approach to rural policy that went wider than farming and noted how policy interventions tilted more towards investment rather than subsidy. However, the review was more critical of the mainstreaming approach and its applicability to remote rural areas and the apparent failure of policy to embrace rural and urban interconnectedness.
- Since 2010, much has changed in terms of rural policy in England. The previous Labour Government's policy of regional devolution has been dismantled by the current Coalition Government. The Commission for Rural Communities (set up to champion rural issues) has been substantially reduced in size and is set to close in 2012. The Coalition Government is focused on a growth agenda and introducing a range of policy measures to support this, including reform of the planning system, the creation of Local Enterprise Partnerships (LEPs) and powers for local communities to determine their own futures through neighbourhood planning. The findings from the Rural Economy Growth Review will be launched in November 2011.
- Looking into the future, the briefing concludes by raising six key issues for rural policy in England, covering a number of different topics: effective mainstreaming and joined up policy-making; a new National Planning Policy Framework which needs to enable rural growth at the same time as protecting the countryside; neighbourhood planning within a clear local plan framework; the benefits and challenges of introducing initiatives to stimulate rural growth, such as rural growth zones; the particular challenges facing small and micro businesses which form the bedrock of rural economies; and the importance of stronger connections between investment in land management and the development of the wider rural economy.



¹ Frances Rowe is an independent consultant, with a long track record in rural policy-making and delivery, both nationally and regionally in England. She was commissioned by the Rural Policy Centre to undertake this review. E: fran.rowe@btinternet.com Twitter: @ruralimpact

Available online at:

http://www.sac.ac.uk/info/120336/thriving_communities/40/2011_rural_policy_in_scotland_and_england

RURAL POLICY CENTRE
POLICY BRIEFING



October 2012 (RPC PB 2012/05)

Building on the New Rural Paradigm: A view from the UK

Jane Atterton and Frances Rowe¹

Introduction

In Autumn 2011, SAC's Rural Policy Centre commissioned Frances Rowe to undertake a comparative analysis of the OECD reviews of rural policy in England (2010/11) and Scotland (2007/08), with reference to their 'progression' towards the principles set out in the New Rural Paradigm (NRP). Following on from this, the authors discussed the changing political, economic and social context for the NRP with representatives from the OECD. As a result, the authors were invited to present to one of the pre-conference workshops ('Building on the New Rural Paradigm') at the OECD's 8th Rural Development Policy Conference in October 2012 in Krasnoyarsk, Russia.

This briefing has been written in support of the authors' presentation at the conference, and is structured into five sections. First, the briefing summarises the key principles of the NRP, before then reporting the key findings of the OECD rural policy reviews in Scotland and England. The briefing then goes on to review what has happened in policy and governance in the two countries since the reviews were undertaken, to see if they are moving closer towards or further away from the NRP. The fourth section of the briefing discusses the key political, economic and social changes which are shaping the future development trajectories of rural areas in both countries. Finally the briefing discusses how the NRP could be adapted and expanded in response to these processes and shifts so that it remains appropriate and relevant as a metric against which OECD countries assess their policy approach to rural areas. It concludes by recommending ways in which the NRP as a framework for rural development could evolve, and practical tools that would support delivery of rural policies more attuned to its principles, thus aiding OECD countries in implementing more effective policies for their rural territories.

¹ Dr Jane Atterton is a Policy Researcher in the Rural Policy Centre at SAC. Frances Rowe is an independent consultant with a long track record in rural policy-making both nationally and regionally in England. Frances was commissioned by the RPC to undertake a review of rural policy making in England and Scotland in November 2011 (available online at: http://www.sac.ac.uk/info/120336/thriving_communities/40/2011_rural_policy_in_scotland_and_england). This paper for the OECD Conference in Krasnoyarsk in October 2012 has been written as a Rural Policy Centre Policy Briefing and the authors are keen to publish it after the conference, subject to the OECD's agreement.

Key findings of the national review of Scotland

Ruralimpact



- Rural policy retains an agricultural flavour, a sectoral approach and is highly centralised
- SRDP is the delivery plan
- Lack of an overall rural strategy
- Priorities: addressing shortage of land for housing, look beyond agriculture, recognising urban-rural linkages



Key findings of the national review of England

*Rural*impact



- Policy interventions tilted towards investment rather than subsidy
- Broad-based approach to rural policy beyond farming
- Critical of mainstreaming; lack of recognition of urban-rural interconnectedness
- Priorities: enhancing mainstreaming, improving integration of urban and rural places, recognising role of rural England as engine of growth

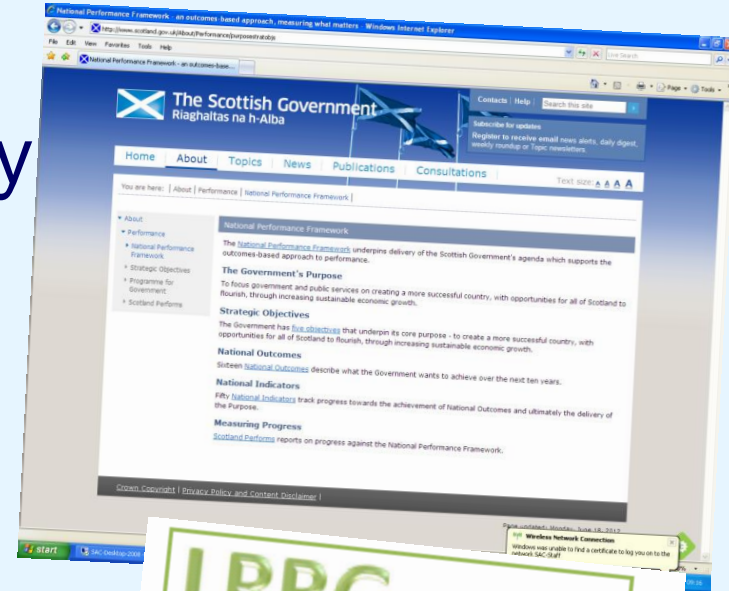


What has happened in Scotland since 2007-08?

Ruralimpact



- NPF
- Continuation of support to key economic sectors
- No rural strategy; no rural economic strategy
- Community ownership and management of assets
- Cities Strategy and National Review of Town Centres



What has happened in England since 2010-11?

*Rural*impact



- Rural Statement 2012
- Continued commitment to mainstreaming
- Five Rural Growth Networks
- Localism Act and new Planning Policy Framework



Closer to or further away from the NRP?

Ruralimpact



Place-based approach?

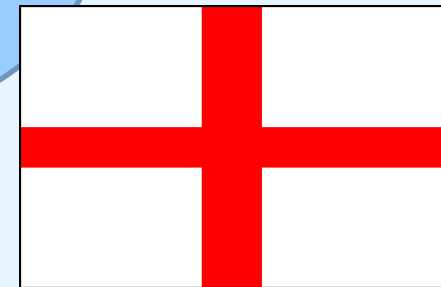
Community enterprise?



Strengthening key sectors?

Investments or subsidies?

Continued focus on the primary sector?



The changing context for the NRP

*Rural*impact



- What are the political, economic and social imperatives driving rural policy in England and Scotland?
 - Economic and fiscal crisis
 - Climate change and moves to a low carbon society
 - Reform of the CAP
 - Shrinking public sector
 - Community empowerment and ownership of assets



So what does all of this mean for the NRP?

*Rural*impact



- Is the changing policy context moving OECD countries closer to the NRP or further away?
- Can the effects and processes of change be accommodated within the NRP? If not, how might the NRP be adapted?
- How resilient are the central principles underpinning the NRP?
- Can the case be made that tailored policies are a necessity not a luxury?
- How can countries be assisted to move towards the NRP?

A possible way forward for the NRP?

*Rural*impact



- The NRP's over-arching principles remain a valuable guide; however, supplementary work could be useful to help policy delivery
 - A programme of evaluation?
 - How to achieve sustainable economic growth? Work on MF of agriculture and ecosystem services would be useful
 - A series of thematic evidence reviews with policy recommendations (e.g. on rural innovation, economic sector reviews, demographic ageing, developing the potential of urban-rural linkages, resilience)



Rural Policy Centre



For more information on the work of the Rural Policy Centre please email: jane.atterton@sac.ac.uk

or see:

www.sac.ac.uk/ruralpolicycentre

Please also note that SAC will be known as SRUC from 1st October 2012

For more information on Rural Impact please email:

fran.rowe@btinternet.com



*Rural*im*pac*t